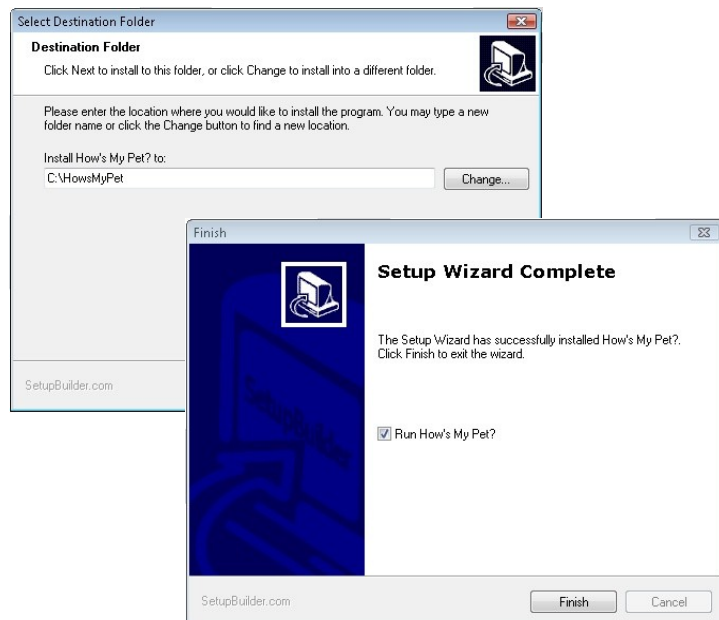


# How's My Pet?

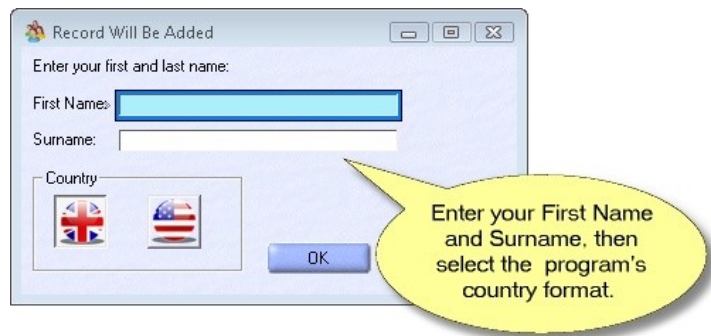
## Installation Instructions

1. Insert the How's My Pet? CD into your PC's CD Player.
2. The installation program should automatically run. If it does not, you can run the setup program manually by going to **My Computer** >> **Open** your **CD drive** >> Right click on **HMPSETUP.EXE** >> Select the **Run** option.
3. Follow the on screen instructions to install the program to the directory 'c:\howsmypet'.
4. Once the installation has completed left click on the Finish button.



## Getting Started

1. Enter your First Name and Surname, then select your country format. Then left click on the OK button.



2. When the program first loads you will notice it is pre-loaded with test data (one sample cat and dog) to help get you started with all the programs functions.
3. To remove the test data first left click on the update pets button. 
4. Then highlight each sample pet and left click on the Delete Pet button.

